



PHOENIX DAY



3250 SERIES
SWING ARM WALL BRACKET

LIGHTING FIXTURES & METALWORK

3431 REGATTA BLVD. | RICHMOND | CA 94804

3250 SERIES
SWING ARM WALL BRACKET

12" ARM EXTENSION

AVAILABLE WITH ROUND OR RECTANGLE BACKPLATE
AND ALL SHADES SHOWN

SHADES U&W AVAILABLE IN TWO LIGHT CLUSTER
OR ONE LIGHT/DIFFUSER DESIGN

DIRECT OUTLET BOX MOUNT OR PIN UP MODEL
WITH 3' CORD COVER AVAILABLE

FINISH OPTIONS

POLISHED BRASS
SATIN BRASS
LIGHT ANTIQUE
MEDIUM ANTIQUE
DARK ANTIQUE
VERDE GRIS
BRONZE
POLISHED CHROME
SATIN CHROME
POLISHED NICKEL
SATIN NICKEL

BACKPLATE & SHADE OPTIONS



1. ROUND BACKPLATE
5" DIA. X 3/4"



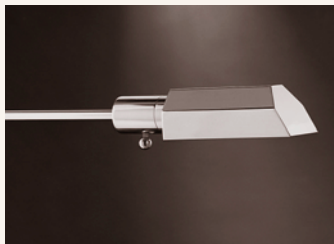
3. RECTANGLE BACKPLATE
4 1/4" X 5" X 3/4"



B. ROUND SHADE
5" DIA. X 3"



E. LONG TUBE SHADE
12 3/4" X 2 1/4"



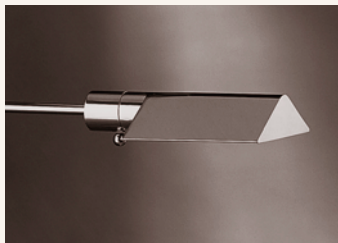
H. HEXAGON SHADE
7" X 2 1/2"



K. CYLINDER SHADE
12 1/2" X 1 1/2"



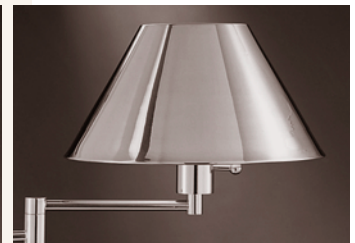
M. SHORT TUBE SHADE
6" X 2 1/2"



T. TENT SHADE
7" X 1 3/4"



U. LINEN SHADE
6" X 12" X 7"



W. BRASS SHADE
5" X 12" X 7"

FOB SAN FRANCISCO, CA
© PHOENIX DAY COMPANY 1989